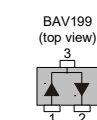
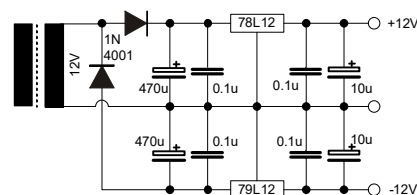


Reichelt Metallschicht 1%, TK 50ppm/°C			
6.810,00	1		
2.150,00	0,31596081	-0,08%	
681,00	0,10000131	0,00%	
215,00	0,03159739	-0,08%	
68,10	0,01000144	0,01%	
31,47	0,00316104	-0,04%	=33 II 680
9.955,57			



Adjustment:  
 Input to GND  
 P1: IC1 offset = 0V @ Pin 6 of IC1  
 P2: Meter offset Null  
 C3: Input square signal e.g. 1kHz, flat response @ Pin 6 of IC1  
 P3: Calibrate Meter with sine signal 1kHz  
 P2: Check Meter offset again

## Analogue AC Millivoltmeter 10Hz...500kHz ( $\pm 1\%$ )

DL6GL, 08.03.2018

